



**San Diego Zoo
Wildlife Alliance**

Hawai'i 4-Day Teacher Workshops in Conservation Science



Join our Professional Learning Community at Hawai'i Volcanoes National Park and KBCC!

Spring Break 2022:

Thurs. March 17 - Sun. March 20th

Contact:

TeacherWorkshops@sdzwa.org

bmasuda@sdzwa.org - KBCC contact

Teacher Workshops (TW) Include:

- All meals & lodging
- Behind the scenes experiences at Keauhou Bird Conservation Center (KBCC)
- \$250 stipend (after full participation)
- Conservation science activities and curriculum materials
- Networking opportunities with Hawai'i Island educators, San Diego Zoo, and KBCC staff

Special consideration to those who

Apply by January 30th

<https://science.sandiegozoo.org/teacherworkshops>



Middle school educators and researchers come together at Hawai'i Volcanoes National Park for a free, one of a kind, hands on training in wildlife conservation education!

Apply today to join us this spring for a fully-funded, 4-day, 3-night residential workshop for middle school science educators, held at Kilauea Military Camp (KMC) on Hawai'i Island.

*"Ho'olaukanaka i ka leo o nā manu."
The voices of the birds give the place a feeling of being inhabited.*

2019 ALUMNI

"Very valuable. Worth setting aside 4 days of summer vacation. Great contacts and opportunities."

"Me ka mahalo NUI for all that your hui/team does."

*"This workshop was so valuable and one of the best workshops I've ever attended, and I've been to a lot 😊
The presenters were very well prepared, professional, knowledgeable, and friendly. I wish I didn't have to wait 5 years to take this course again. Mahalo for this opportunity!"*

Visit our website to learn more about the Keauhou Bird Conservation Center (KBCC) and the Community Engagement team at the San Diego Zoo Wildlife Alliance.

Our program offers educators the opportunity to study the science of saving species, all while gathering stories, activities, and lessons framed in the context of conservation science.

Applicants are encouraged to apply in school site teams. These teams can be cross-curricular and cross-grade level (6-8), provided there is at least one science educator.

About Us:

The San Diego Zoo's research facility is located adjacent to the San Diego Zoo Safari Park in Escondido, CA.

With over 200 researchers here and at field sites around the world year round, including KBCC and MBCC on Maui, we are the largest multidisciplinary research team based at a zoo.

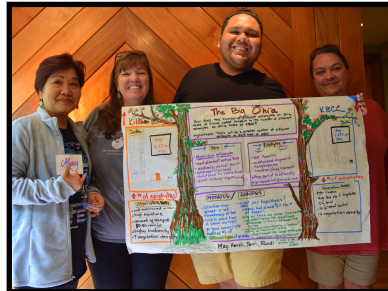
Research Teams:

- Biodiversity Banking
- Community Engagement
- Conservation Genetics
- Disease Investigation
- Plant Conservation
- Population Sustainability
- Recovery Ecology
- Reproductive Sciences



Experiencing Keauhou Bird Conservation Center

The Keauhou Bird Conservation Center, located outside the town of Volcano on the Big Island, includes 18 'ālalā aviary buildings, two forest bird barns and a main building with offices, a veterinary clinic, and a suite of incubation and hand-rearing rooms. Two-thirds of the world's population of 'ālalā reside here, along with flocks of puaiohi, palila, Maui parrotbills, and visiting wild nene.



Experimenting Through Inquiry

Step into your students shoes and learn what it means to do science through "kilo" or observations of the world around you.

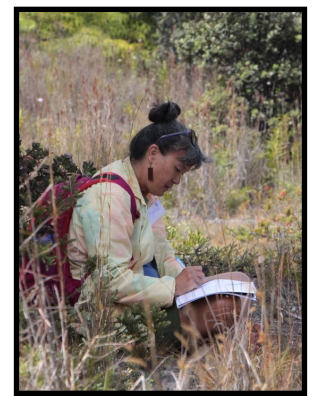
Develop your own research question and methods to explore Hawai'i's unique biodiversity, and grow your own confidence to guide your students through open inquiry. Teachers come away with new and exciting, low tech ways to engage students with inquiry.

Exploring Field Methods

At Hawai'i Volcanoes National Park and the Keauhou Bird Conservation Center teachers explore native Hawaiian plant and animal species. In this beautiful setting they have the opportunity to explore methods



for biodiversity monitoring, habitat restoration, and remote sensing, all while learning how new technologies in ecology can be brought to life in the classroom.



Apply online at
science.sandiegozoo.org/teacherworkshops
Special consideration to those who apply by
January 30th, 2022